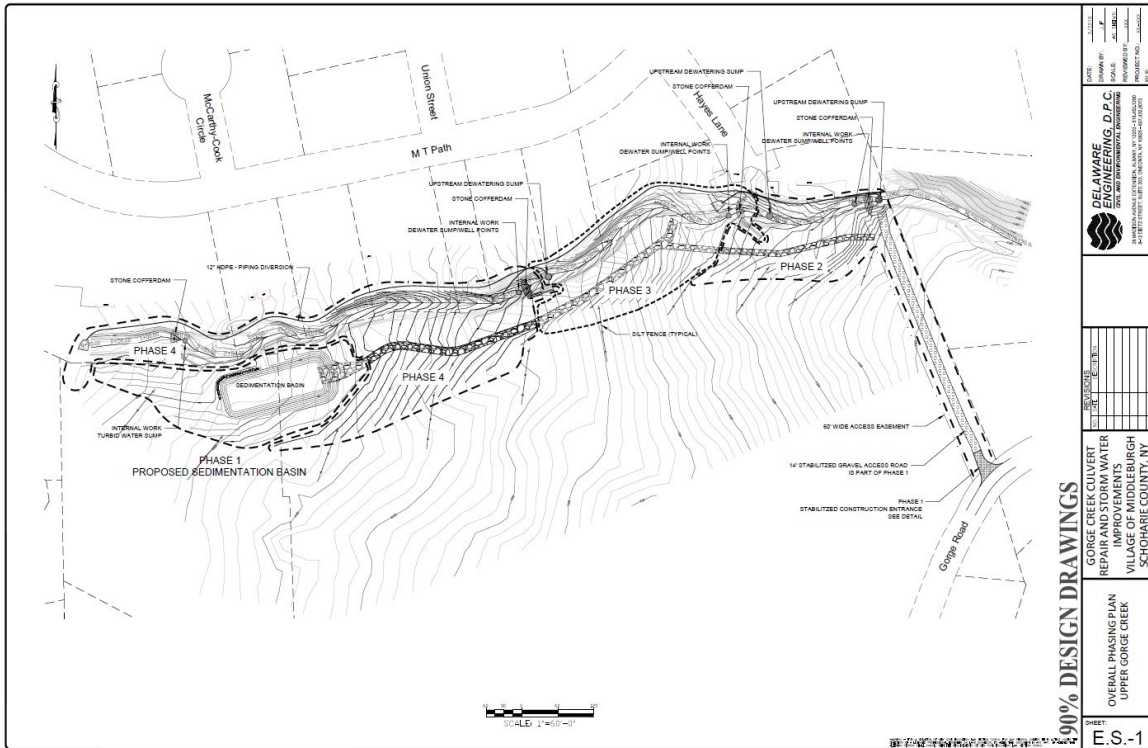


Status update for Gorge Creek Project 9/9/2024 Middleburgh Village



Original Design for Sediment Basin



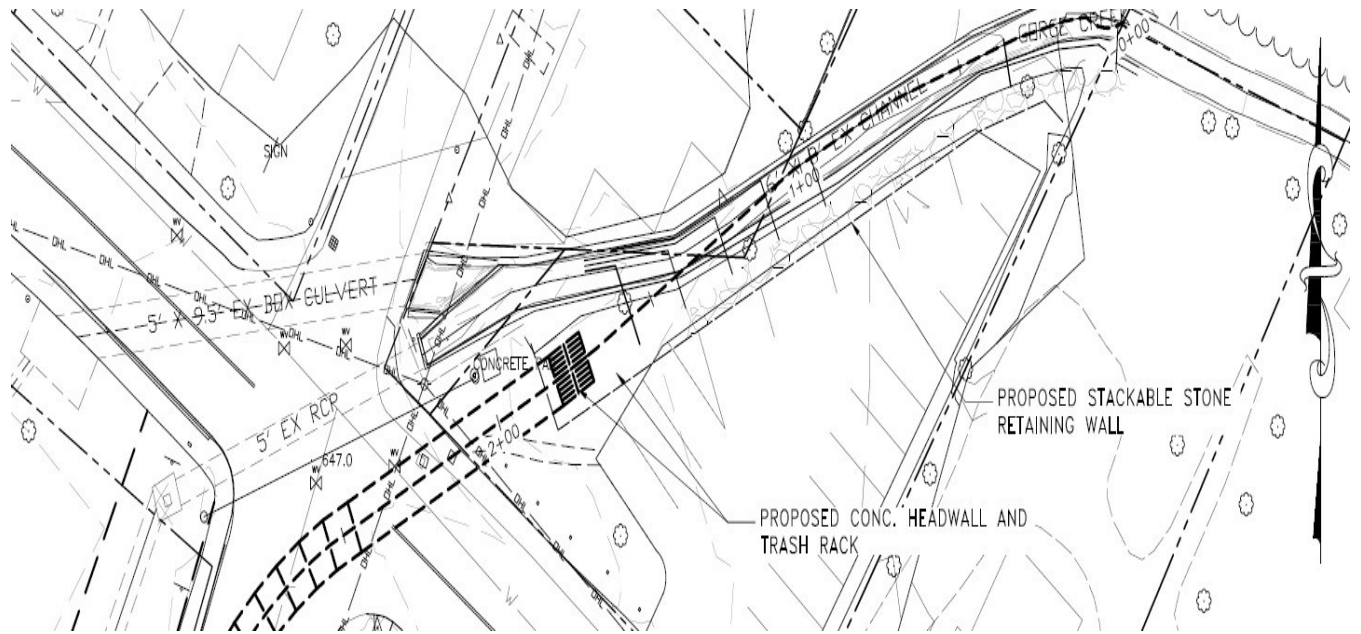
Sediment Basin at work spring thaw 2022



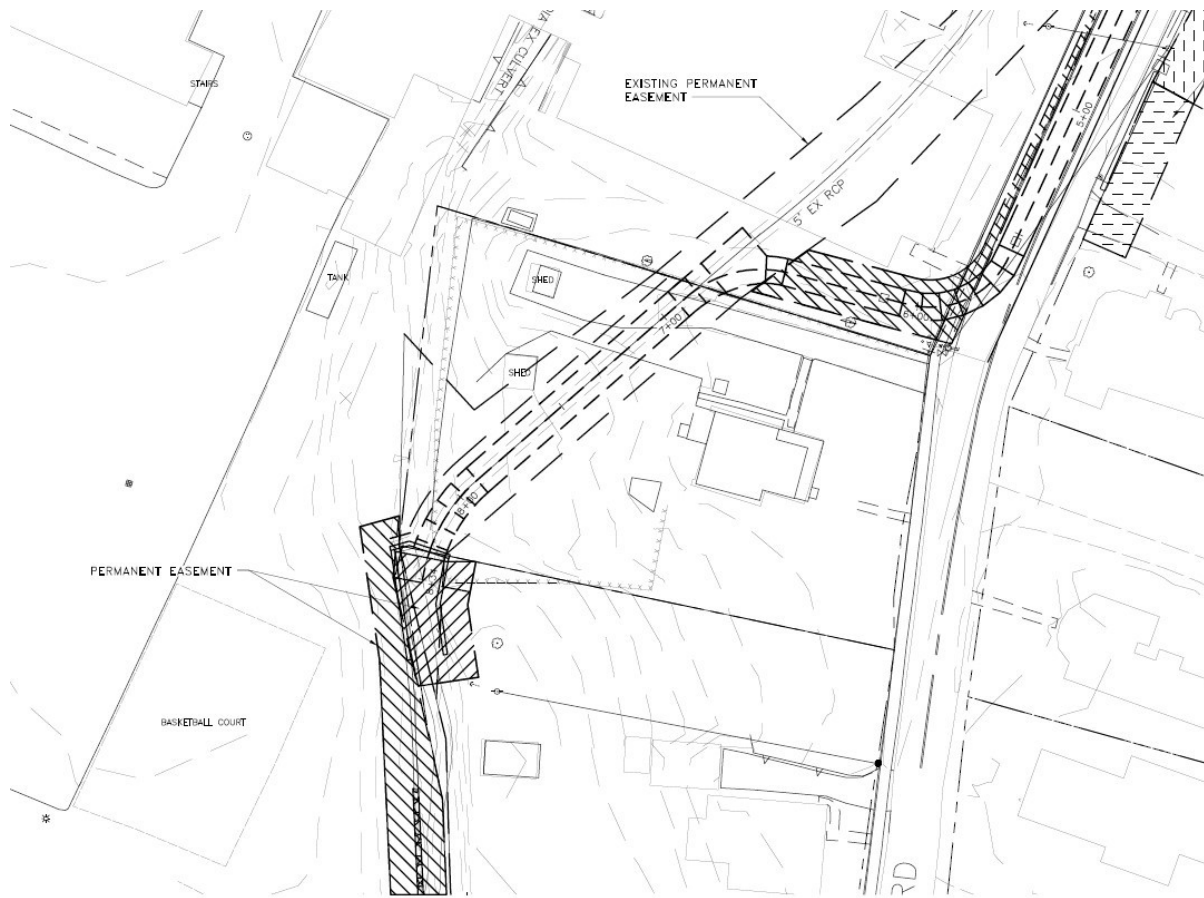
Cleaned out sediment basin 9/5/2024



Spoils pile from cleanout 9/5/2024



Inlet design for new box culvert at Main Street



Outlet design for new box culvert behind High School



Inside lower cleanout chamber at convergence of old and new primary culverts



View towards outlet of cleanout chamber (note lip for holding bedload)



View upstream towards Main Street under Clauverwie Road showing minor aggradation



View into new culvert inlet showing some larger deposition for approximately 20 feet into conveyance